

# Technical News

# Bulletin

Cham, 15 Jan. 2004

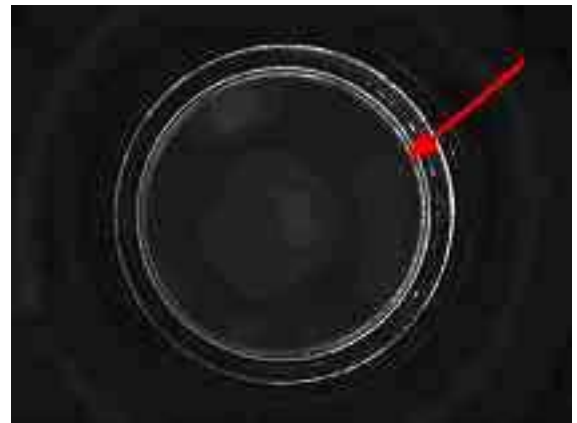
## **New, Dual-Camera Configuration of ProScanner 3200 Available**

The Emhart Powers ProScanner 3200 Sealing Surface Inspector is now available in a dual-camera configuration that enables more detailed inspection of the sealing surface. This new, dual-camera system is especially useful in detecting difficult to see wire-edge defects without increasing false rejects.

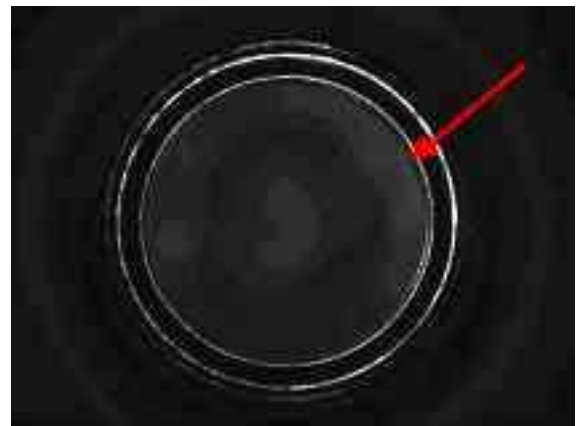
This option, available on new ProScanner 3200s, as well as an upgrade for existing systems adds a second camera and light source. In this configuration, the standard light source and camera can be set up to detect the conventional sealing surface defects (lineovers, chips, blisters, flange finish and knockouts). The second camera uses an additional, single row of LED's that are aimed towards the inside of the container finish. This special light source can reliably illuminate small wire edge defects on the inside edge of the sealing surface. A binary algorithm is used to process the image and detect the defect. Figure 1 shows a sealing surface image with a clearly visible wire edge defect. Figure 2 shows a sealing surface image, using the same lighting, of a good container.

This new configuration also includes Dual Camera software that shows both images on the display. Each image has a highlighted box around it. If the container is good, the box remains green. If the container is determined to be bad, the box will turn red alerting the operator quickly that a defective container is arriving at the reject point.

For more information about the new dual-camera configuration for the ProScanner 3200, contact your Emhart Glass representative.



**Figure 1 – Wire Edge defect shown**



**Figure 2 – Good bottle**